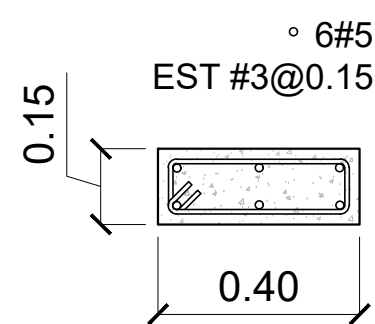
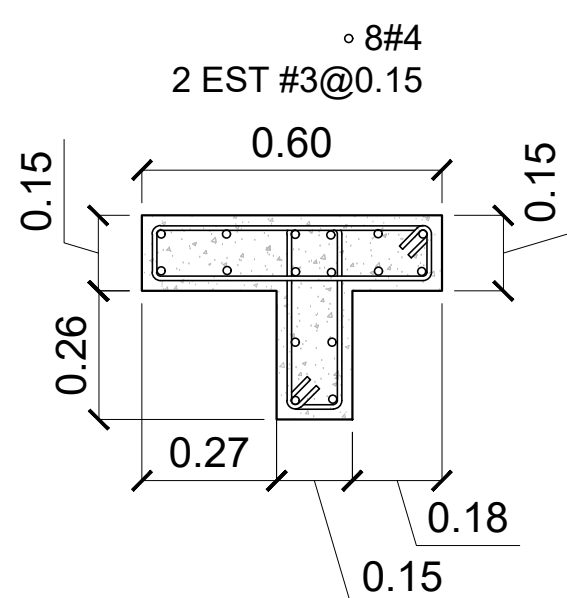


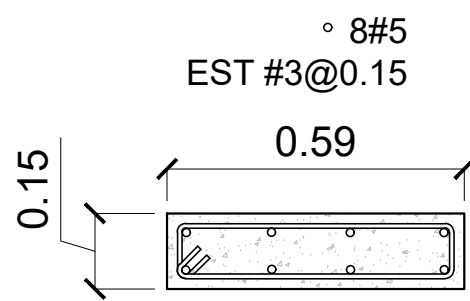
NC-1



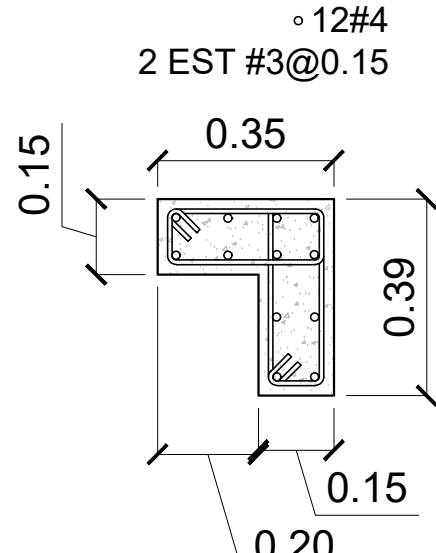
NC-2



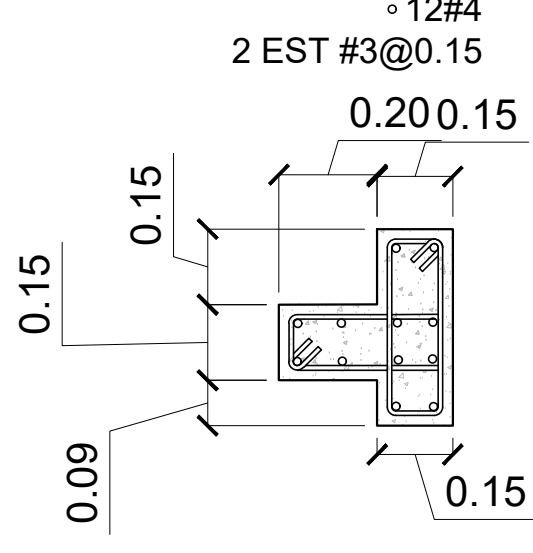
NC-3



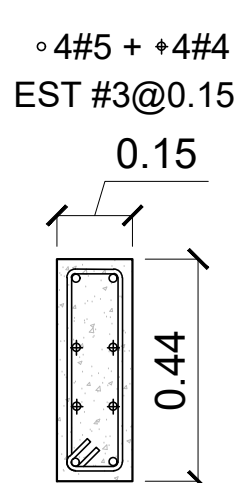
NC-4
ESC.: 1:20



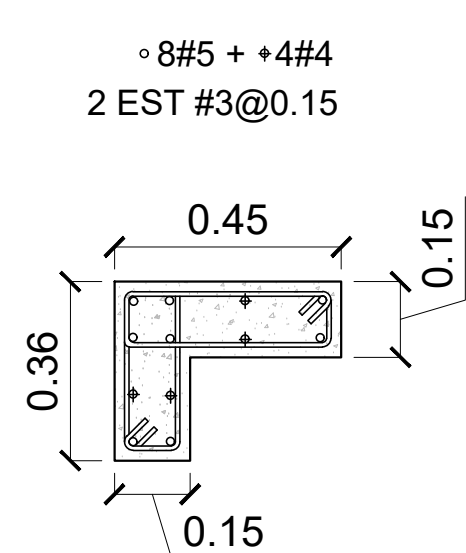
NC-5



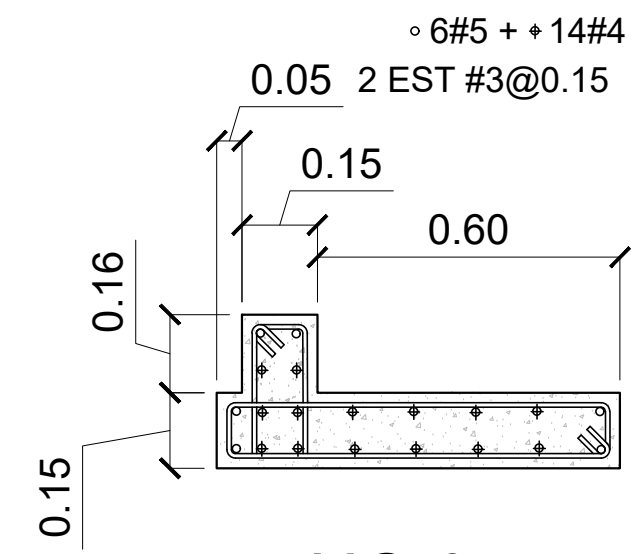
NC-6



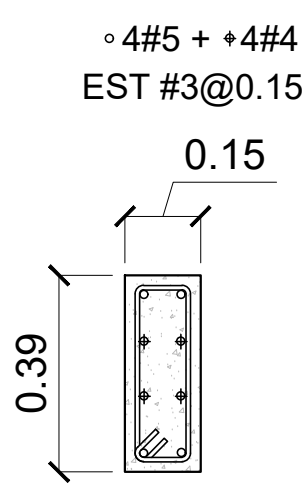
NC-7



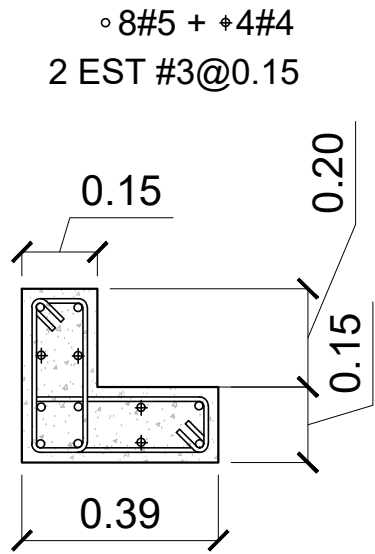
NC-8



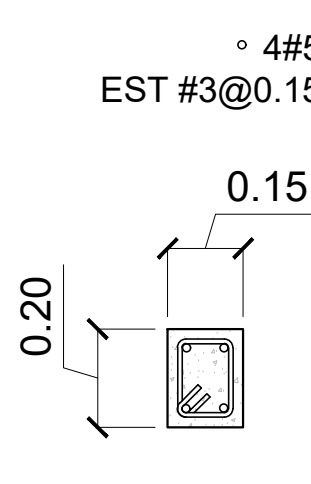
NC-9



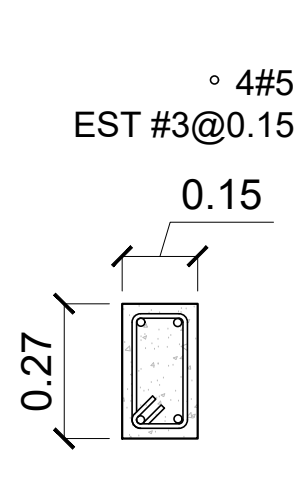
NC-10



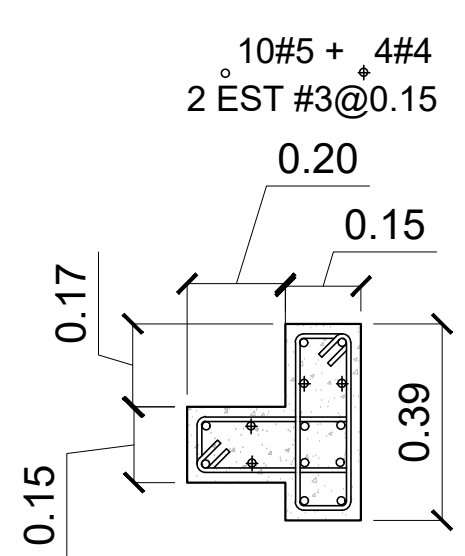
NC-11



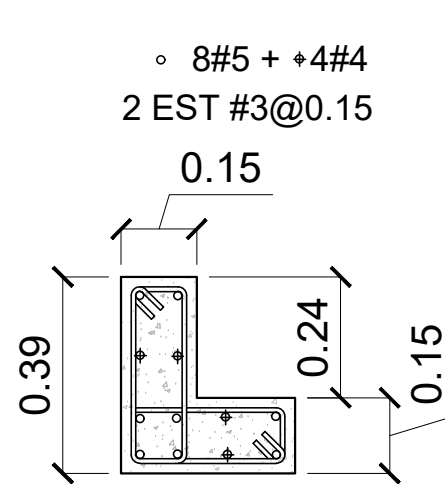
NC-12



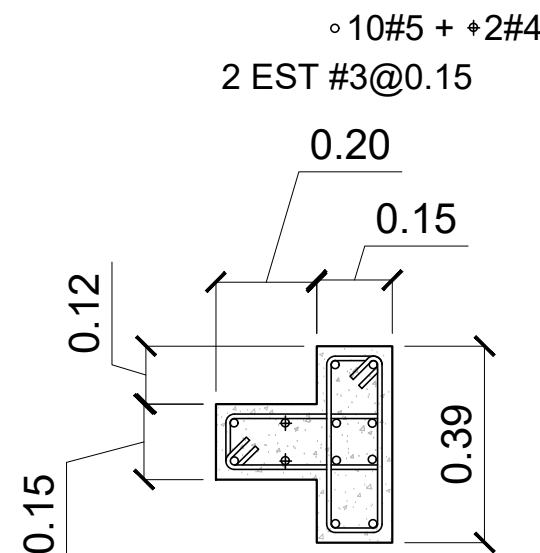
NC-13



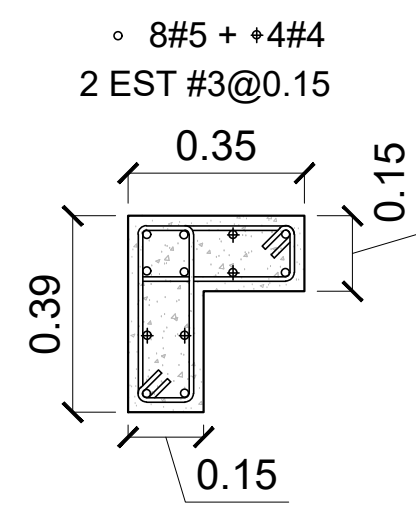
NC-14



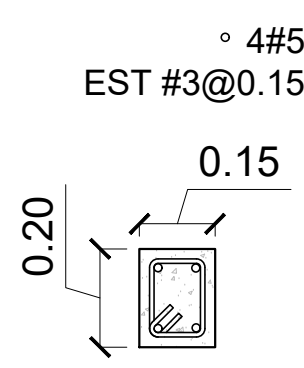
NC-15



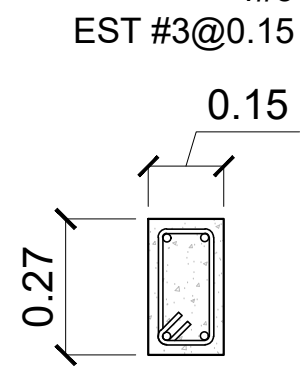
NC-16



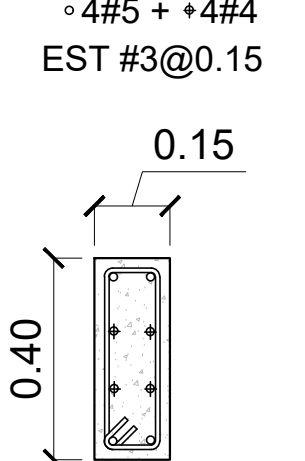
NC-17



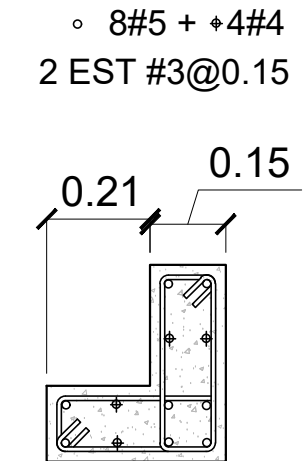
NC-18



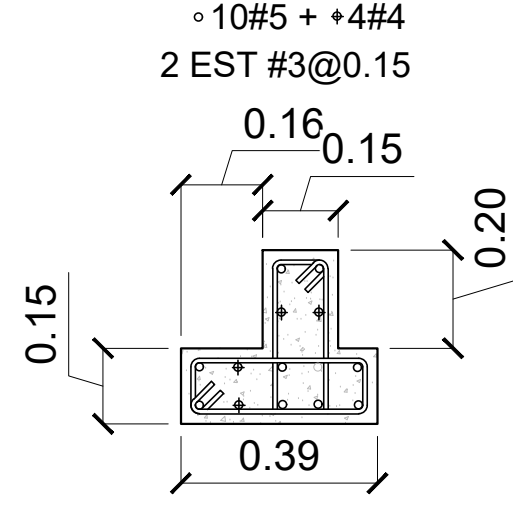
NC-19



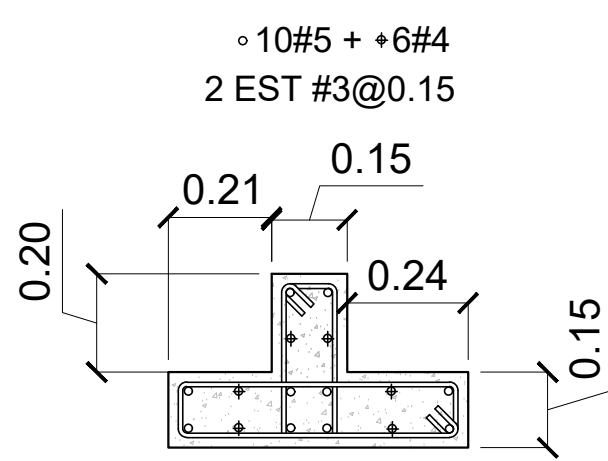
NC-20



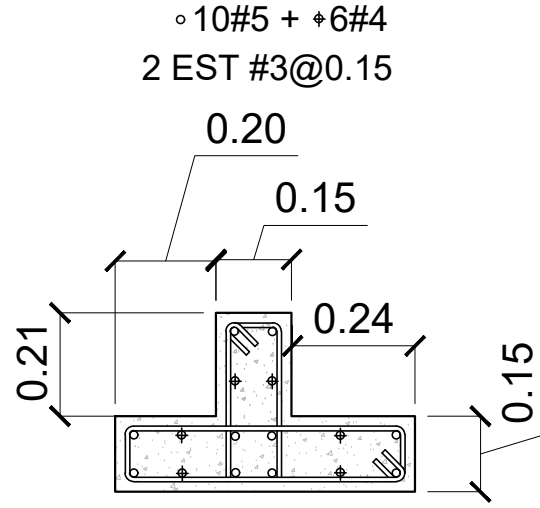
NC-21



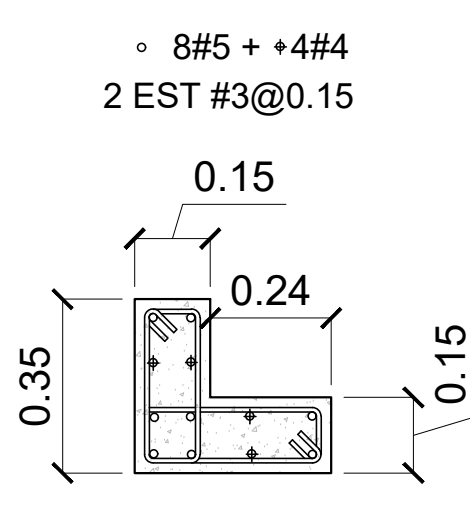
NC-22



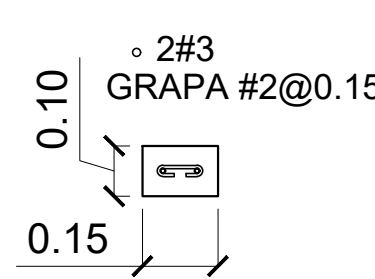
NC-23



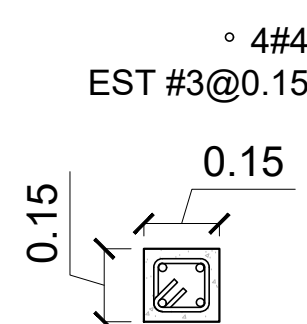
NC-24



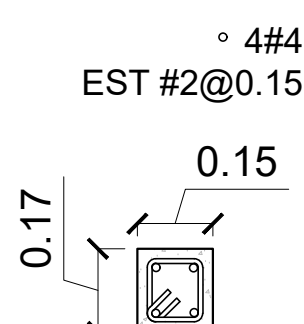
NC-25



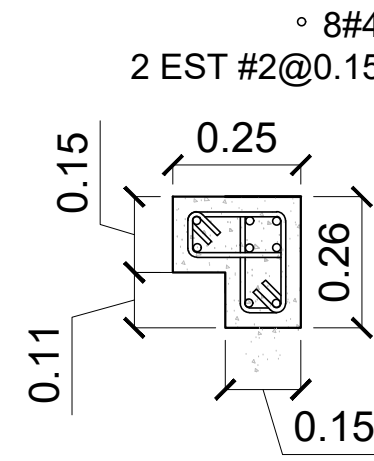
NC-26



NC-27



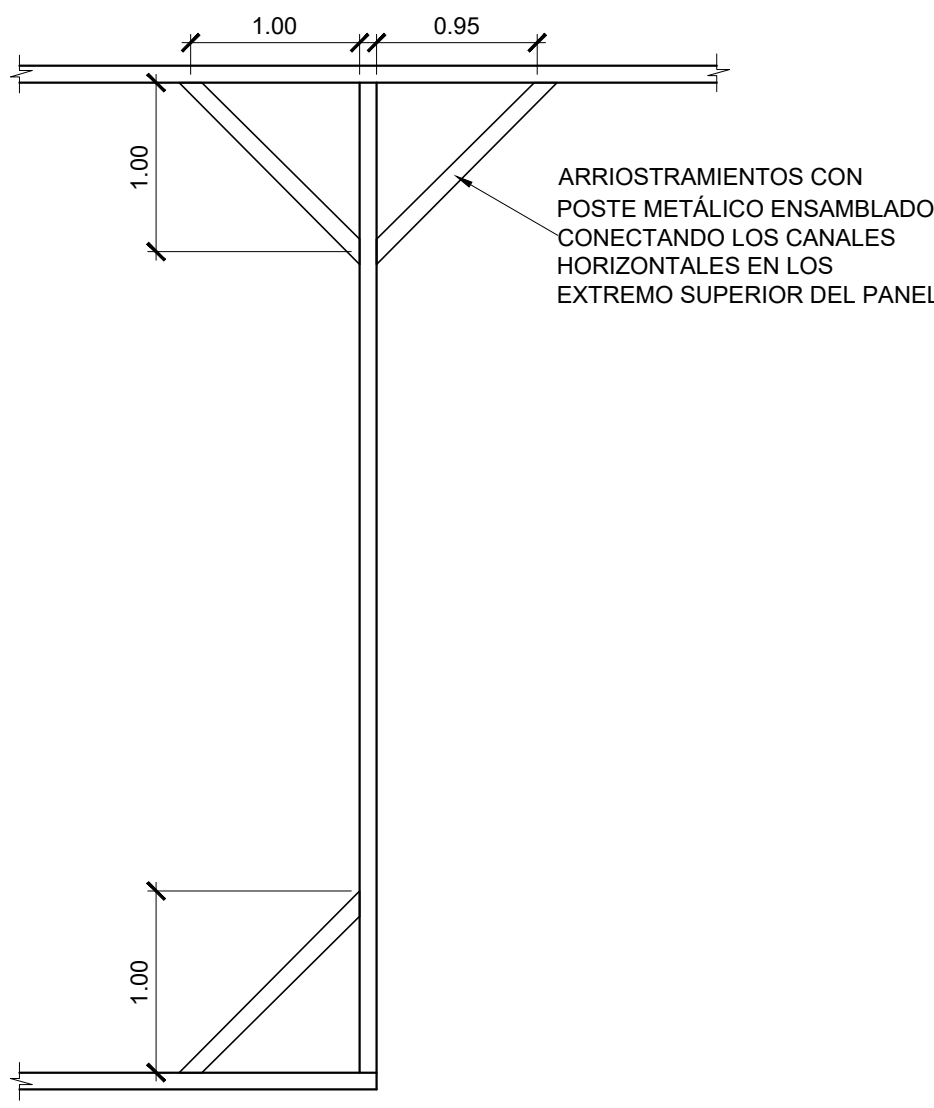
NC-28



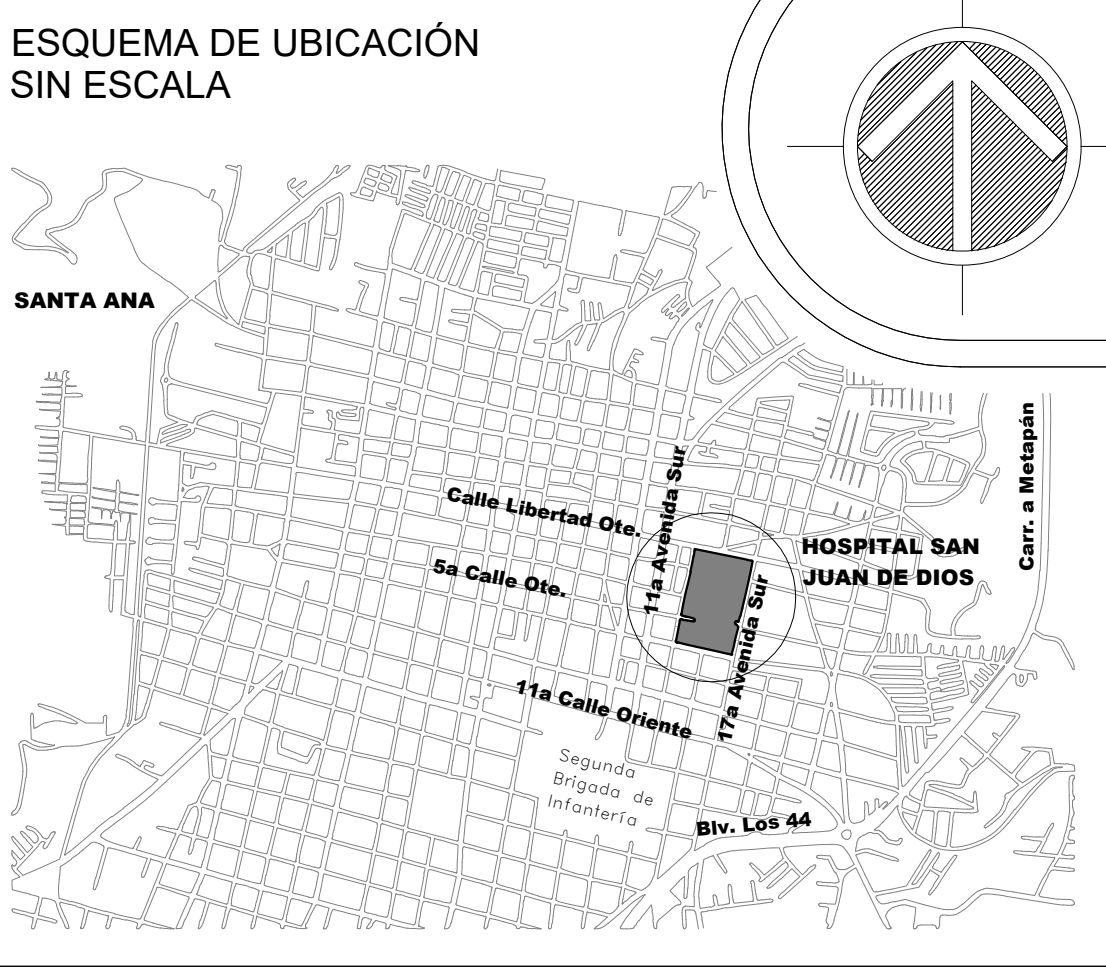
NC-29


DETALLES DE NERVIOS

BANCO DE LECHE HUMANA DEL HOSPITAL NACIONAL SAN JUAN DE DIOS SANTA ANA
Esc 1:15



ARRIOSTRAMIENTO LATERAL DE DIVISIONES LIVIANAS - SIN ESCALA



 REPUBLICA DE EL SALVADOR		
PROYECTO: BANCO DE LECHE HUMANA DEL HOSPITAL NACIONAL SAN JUAN DE DIOS, SANTA ANA.		
FINANCIAMIENTO: CRECIENDO SALUDABLES JUNTOS - BIRF N° - 9065 SV		
DIRECCIÓN: 13 AV. SUR 1, SANTA ANA.		
CONTENIDO: DETALLES DE NERVIOS		
DISEÑO ARQUITECTONICO: UGPPI-CSJ	DISEÑO ESTRUCTURAL: UGPPI-CSJ	
DISEÑO ELECTRICO: UGPPI-CSJ	DISEÑO HIDRAULICO: UGPPI-CSJ	
REVISO Y APROBO: UGPPI-CSJ	ESCALA: INDICADAS	FECHA: MARZO 2025
AREA CONSTRUIDA: OE: 15.20 m2 ARQ.:281.15 m2	HOJA No.: ES-03	CORRELATIVO: 29/62